

# Model 1516 Axial Torsion Load Cell

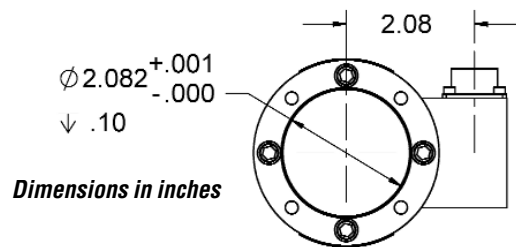
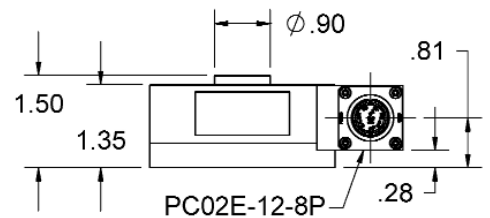
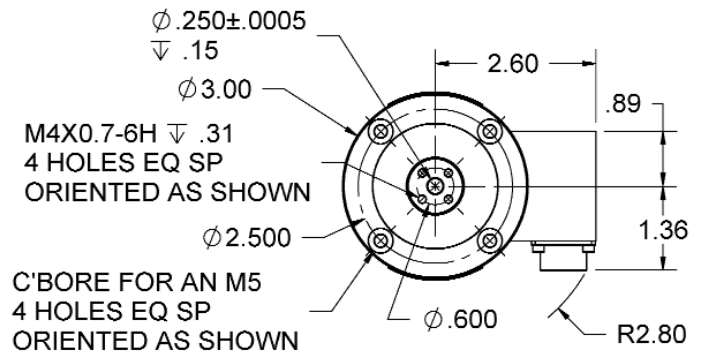
**Why the Interface model 1516 Axial Torsion Load Cell is the best in class:**

- Capacities 100 lb 50 lbf-in (Axial/Torsion)
- Axial force torque
- Minimal crosstalk
- Fatigue rated



## SPECIFICATIONS

| ACCURACY                        | Axial<br>Bridge A | Torsion<br>Bridge B |
|---------------------------------|-------------------|---------------------|
| Nonlinearity-% FS               | ±0.04             | ±0.05               |
| Hysteresis-% FS                 | ±0.04             | ±0.05               |
| Nonrepeatability-% RO           | ±0.02             | ±0.05               |
| Creep, in 20 min-%              | ±0.025            | ±0.025              |
| <b>TEMPERATURE</b>              |                   |                     |
| Compensated Range-°F            | 15 to 115         | 15 to 115           |
| Compensated Range-°C            | -10 to 45         | -10 to 45           |
| Operating Range-°F              | -65 to 200        | -65 to 200          |
| Operating Range-°C              | -55 to 90         | -55 to 90           |
| Effect on Output-%/100°F - MAX  | ±0.08             | ±0.08               |
| Effect on Zero-% RO/100°F - MAX | ±0.15             | ±0.15               |
| <b>ELECTRICAL</b>               |                   |                     |
| Rated Output-mV/V (T & C)       | +1.50 ±0.15       | -1.50 ±0.15         |
| Zero Balance-% RO - MAX         | ±2.0              | ±2.0                |
| Input Resistance-Ohms           | 700±7             | 700±7               |
| Output Resistance-Ohms          | 700±7             | 700±7               |
| Excitation Voltage - VDC MAX    | 20                | 20                  |
| <b>MECHANICAL</b>               |                   |                     |
| Calibration                     | T&C               | CW & CCW            |
| Safe Overload-% CAP - MAX       | ±200              | ±200                |
| Ultimate Overload-% CAP - MAX   | ±400              | ±400                |



Dimensions in inches