

DXI-100/200 Series Inclinometer

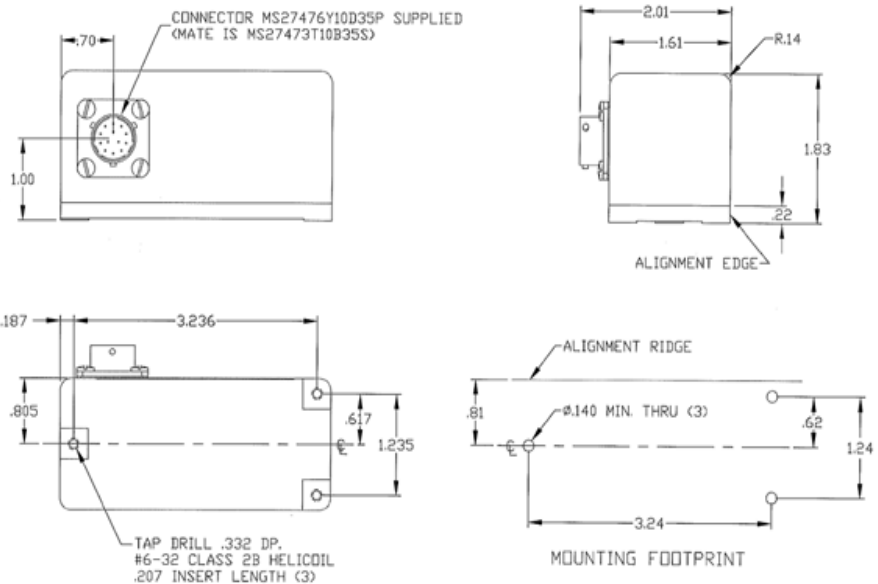
Making Sense out of Motion...

Digital Output - Single or Dual Axis for a wide variety of applications.

The Jewell **DXI-100/200 Series** single or dual digital inclinometer takes Jewell's highly accurate analog closed loop sensor technology to the next level.



Outline Diagram: DXI-100/200 Series Digital Inclinometer

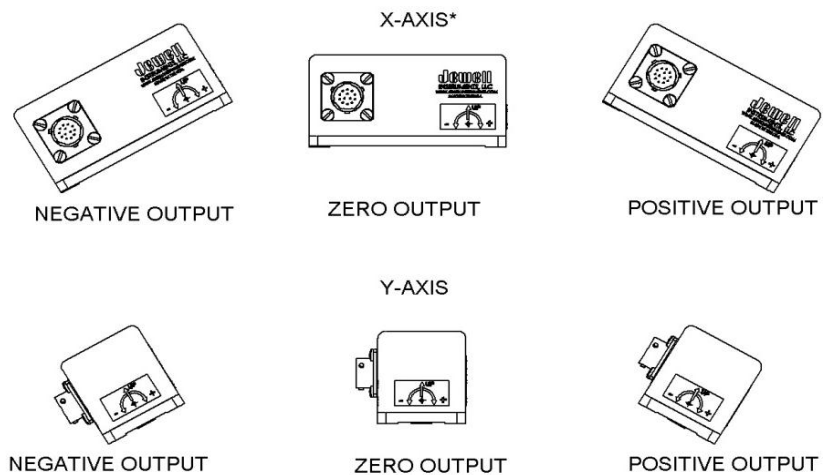


Features

- Digital output
- Resolution 0.001°
- Mechanical Shock 1500g 1msec half sine
- Industry Standard EIA RS485 and EIA RS422 output
- For use in high shock and vibration environments
- High Precision and Performance
- Low Noise

Applications

- Radar/Antenna Control
- Structural Monitoring
- Linear Acceleration/Deceleration Measuring
- Automatic Train Position Control
- Seismic Monitoring
- Platform Leveling



*FOR DXI-100 SERIES SENSITIVE AXIS THIS DIRECTION ONLY

DXI-100/200 Series Inclinometer

Making Sense out of Motion...

Performance

Input Range ¹ , °	±1.0	±3.0	±14.5	±30.0	±60.0
Number of Axis	1,2	1,2	1,2	1,2	1,2
Non Linearity ² , %FRO, Max	0.02	0.015	0.02	0.02	0.03
Scale Factor Tolerance, % Max	0.05	0.05	0.05	0.05	0.05
Scale Factor Temperature Sensitivity, % reading/°C, Max	0.01	0.01	0.01	0.01	0.01
Output at 0° Tilt, °Max	0.01	0.01	0.05	0.05	0.05
Bias Temperature Sensitivity, millideg. /°C maximum	5	5	5	5	5
Bandwidth (-3dB), Hz, Nom ³	3	6	30	30	30
Transverse Axis Misalignment, °, Max	0.05	0.05	0.5	0.5	0.5
Angular Resolution and Threshold, °	0.001	0.001	0.001	0.001	0.001

Digital Output

Interface	EIA-RS485/EIA-RS422
Protocol	Proprietary
Output Representation	Degrees

Electrical

Supply Voltage, Volts DC	10 to 30
Input Current, mA, Max	DXI-100, 80 mA & DXI-200, 100 mA

Environmental

Operational Temp Range, °C	-40 to +70
Storage and Temp Range, °C	-40 to +70
Protection Class per IEC 529	IP67
NEMA Enclosure Rating	6
Seal	MILD-STD-202 Method 112
Shock Survival	1500g, 1msec, ½ sine
Vibration Survival, grms (20Hz to 2 KHz)	20

Enclosure

Housing Material	Anodized Aluminum
Weight	DXI-100 8oz [226.80 g]/ DXI-200 10oz [283.50 g]
Connector Type	MS27476Y10D35P
Recommended Mating Connector	MS27473T10B35S

- NOTES:
- 1- Full range is defined as "from negative full input angle to positive full input angle"
 - 2 - Non-linearity is specified as deviation of output referenced to a best fit straight line, independent of misalignment.
 - 3 - In default condition without averaging.
 - 4- Not factory set - Operator depended EIA-485 or EIA-422

How to Order

DXI 100 - 1°	02550284-001	DXI 200 - 1°/1°	02550285-001
DXI 100 - 3°	02550284-002	DXI 200 - 3°/3°	02550285-002
DXI 100 - 14.5°	02550284-003	DXI 200 - 14.5°/14.5°	02550285-003
DXI 100 - 30°	02550284-004	DXI 200 - 30°/30°	02550285-004
DXI 100 - 60°	02550284-005	DXI 200 - 60°/60°	02550285-005

