

LOAD CELL CHARACTERISTICS

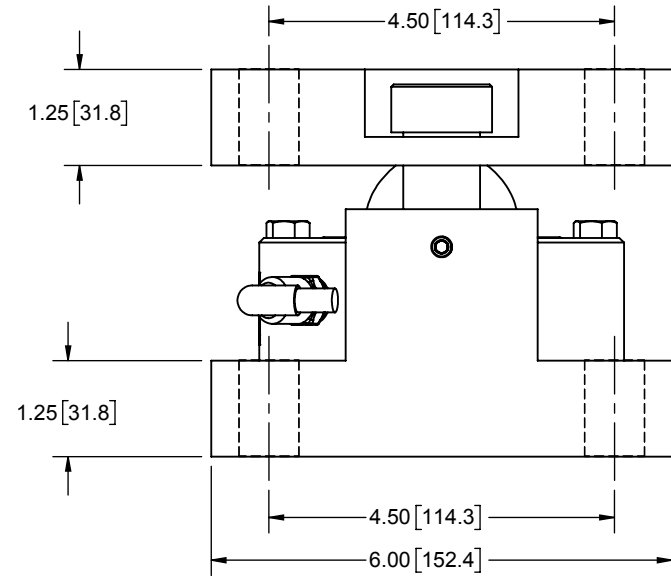
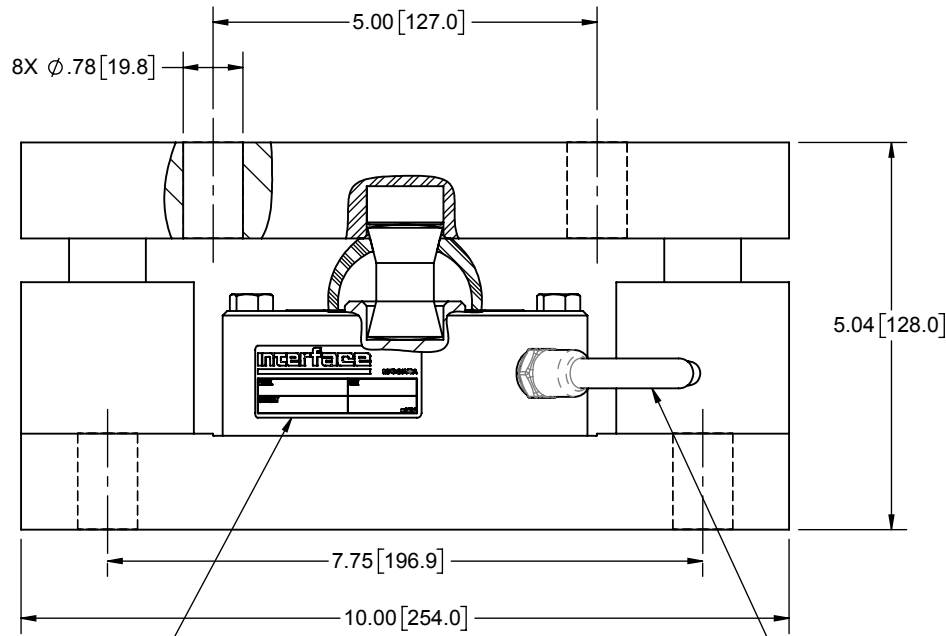
CAPACITY 25K, 50K (lbf)

Interface Inc. claims proprietary rights in the information disclosed herein. This drawing is furnished in confidence on the express understanding that neither it nor any reproduction thereof will be disclosed to others or used for the purpose of manufacture or procurement of the article or part shown hereon without written permission of Interface Inc. The drawing shall remain the property of Interface Inc. and shall be returned upon request by Interface Inc.

80224

REVISIONS

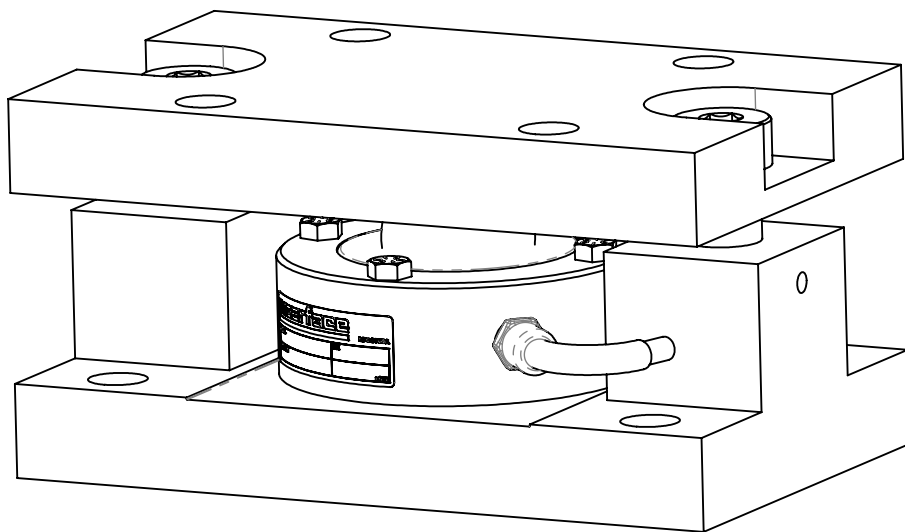
REV.	DESCRIPTION	DATE	APPROVED
A	INITIAL RELEASE	04/07/98	
B	ADDED BOLT HEADS TO FLEXURE	07/20/98	
C	ADDED NOTE 4	08/26/98	
D	REDRAWN, UPDATED TO CURRENT STD'S, 5.04 [128] WAS 5.00 [127]	01/24/2018	AL



IDENTIFICATION LABEL INCLUDING:
MODEL, CAPACITY, SERIAL NUMBER & OUTPUT

① Ø.30 [7.6] O.D. 4 CONDUCTOR 20 GAGE SHIELDED CABLE, POLYURETHANE JACKET

INTEGRAL CABLE PINOUT	
COLOR	FUNCTION
RED	+ EXCITATION
GREEN	+ OUT
WHITE	- OUT
BLACK	- EXCITATION
SHIELD	N/C
COMPRESSION DOWNSCALE	



2. NET WEIGHT: 54 lbs [24kg]

① STANDARD CABLE LENGTH IS 30ft [10 m]
NON-STANDARD CABLE LENGTH PER OPTION CODE.

UNLESS OTHERWISE SPECIFIED
DIMENSIONS ARE IN INCHES [mm]
TOLERANCES ARE:
ANGLES ± 0° 30'
.XX ± .01 [0.25]
.XXX ± .005 [0.13]

CREATOR: JEP
DATE: 4/7/1998
DESIGNED:
DETAILED:
WEIGHT: (APPROX) 51 (lbs)

Interface
FORCE MEASUREMENT SOLUTIONS
7418 E. HELM DRIVE
SCOTTSDALE, AZ 85260 USA

TITLE:
**OUTLINE MODEL:
A4221/A4621**

SIZE: A DWG. NO: 80224 REV: D
SCALE: 1:2.5 SHEET 1 OF 1