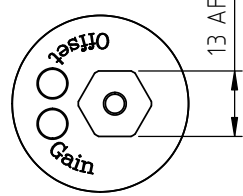
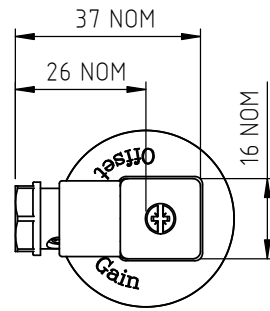
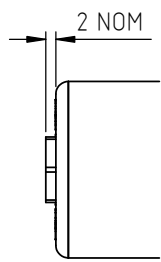


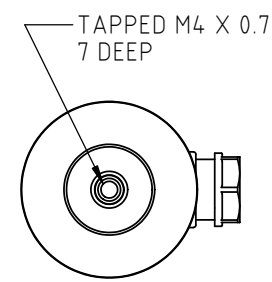
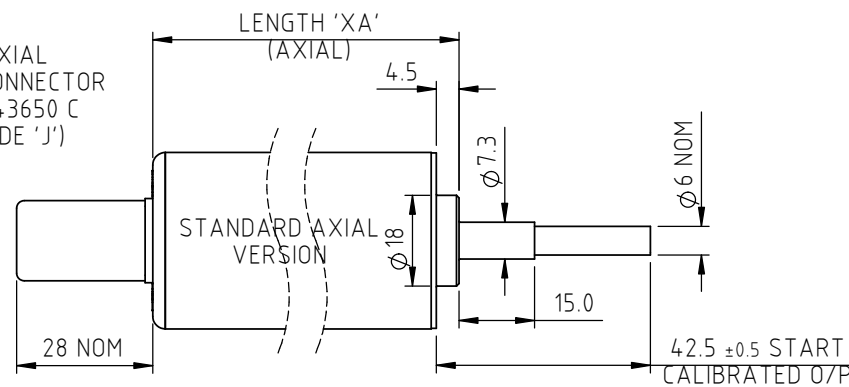
GAIN & OFFSET ADJUSTMENTS SEALED (CODE 'Y')



AXIAL IP67 SHORT CABLE GLAND (CODE 'Mxx,MQxx')



AXIAL IP65 CONNECTOR DIN 43650 C (CODE 'J')



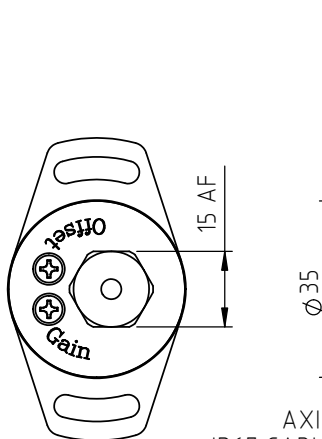
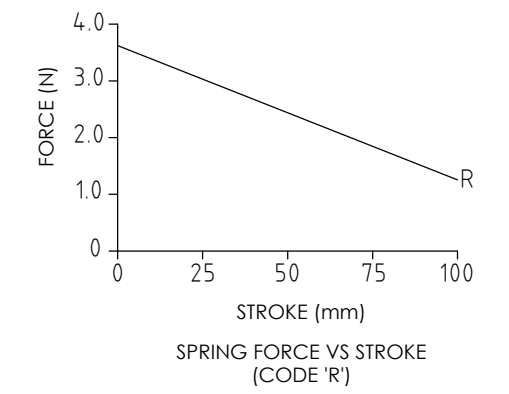
DIRECTION OF TRAVEL →

ELECTRICAL OPTIONS/ SPECIFICATIONS  
 OUTPUT SUPPLY (NOM.)  
 'A' 0.5 - 4.5V RATIOMETRIC 5V  
 SUPPLY CURRENT 12mA TYP. 20mA MAX.  
 CONNECTIONS: CABLE 3-CORE CABLE 5-CORE CONNECTOR  
 +Ve RED RED :1  
 + SENSE (5-WIRE ONLY) - ORANGE :1  
 0V BLACK BLACK :3  
 - SENSE (5-WIRE ONLY) - GREY :3  
 OUTPUT WHITE WHITE :2  
 BODY SCREEN SCREEN :4  
 CABLE: 0.2mm<sup>2</sup>, O/A SCREEN,  
 PUR JACKET O/D; 3-CORE: Ø4mm, 5-CORE: Ø4.6mm,  
 SUPPLIED WITH 50cm OR REQUIRED LENGTH IN cm. e.g. 'L50/LQ50' (3/5-CORE)  
 CONNECTORS; MAXIMUM CONDUCTOR CROSS SECTION 0.75mm<sup>2</sup>

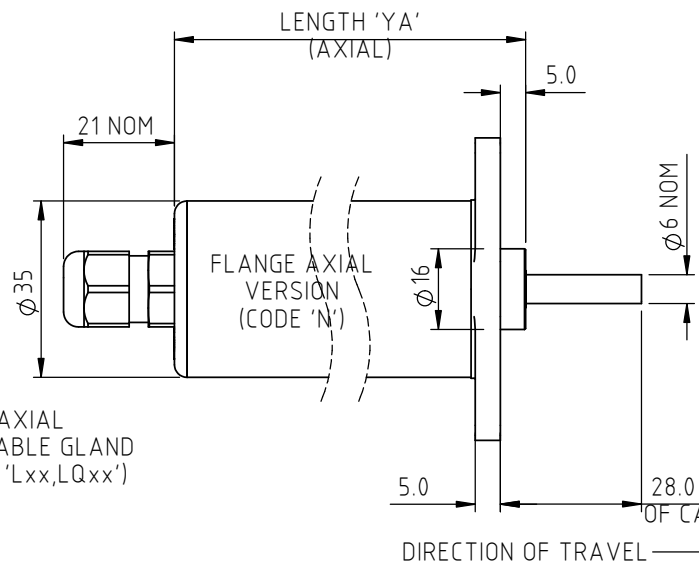
RANGE OF DISPLACEMENT FROM 0-51mm TO 0-100mm IN INCREMENTS OF 1mm e.g.36.  
 BODY MATERIAL:- STAINLESS STEEL.  
 FLANGE BASE MATERIAL:- STAINLESS STEEL (CODE 'N')

FURTHER OPTIONS:  
 SINGLE PAIR OF BODY CLAMPS (CODE 'P')  
 SPRUNG PLUNGER, TO EXTENDED POSITION (CODE 'R')  
 DOME END (CODE 'T') IN CONJUNCTION WITH SPRUNG PLUNGER (CODE 'R')  
 PLUNGER FREE (CODE 'V') NOT AVAILABLE WITH SPRUNG OPTION  
 MAGNETIC TIP (CODE 'WA')

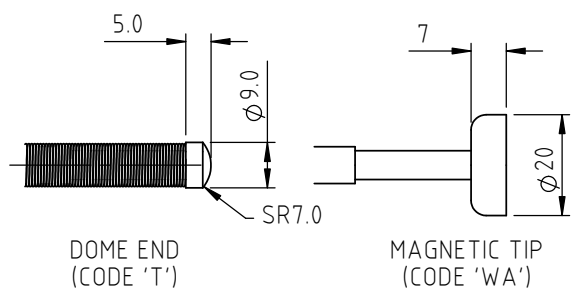
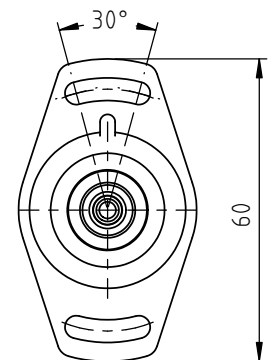
GAIN AND OFFSET ADJUSTMENTS NOT AVAILABLE WITH RADIAL BODY, CODE 'Lxx' AND 'K' OPTIONS



AXIAL IP67 CABLE GLAND (CODE 'Lxx,LQxx')

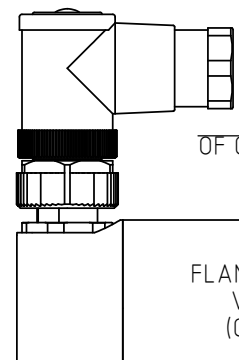


FLANGED BASE 2 OFF 4.5 SLOTS ON 48 PCD

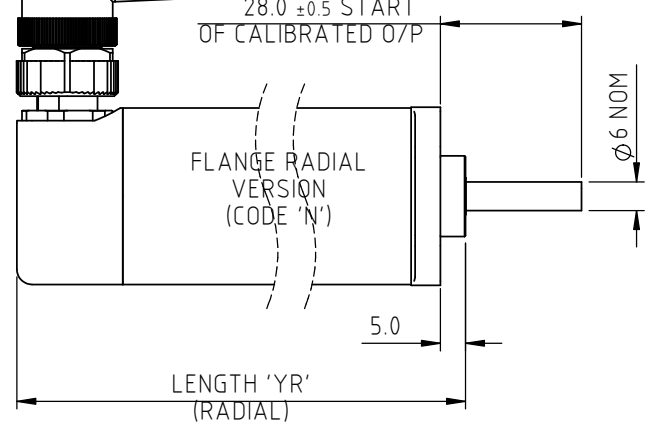


DIRECTION OF TRAVEL →

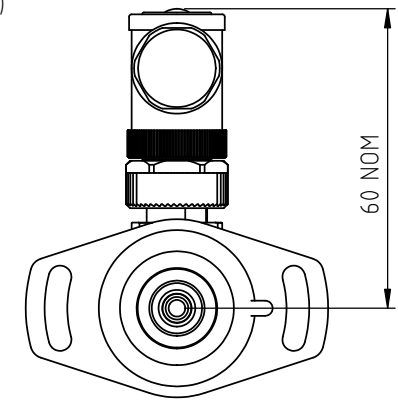
RADIAL IP67 M12 CONNECTOR IEC 61076-2-101 (CODE 'K')



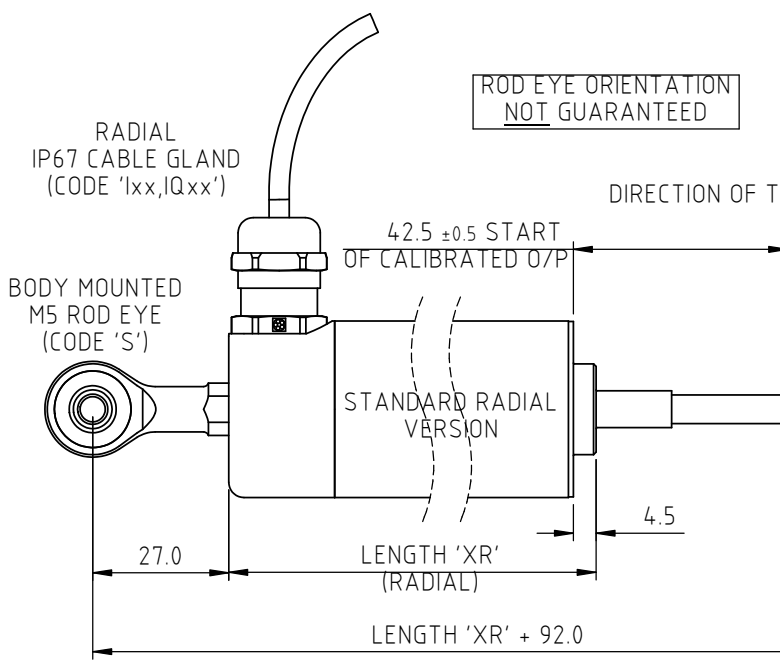
DIRECTION OF TRAVEL →



FLANGE RADIAL VERSION (CODE 'N')



RADIAL IP67 CABLE GLAND (CODE 'Lxx,LQxx')

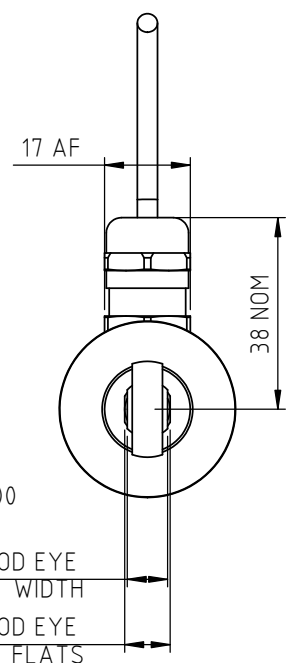


ROD EYE ORIENTATION NOT GUARANTEED

BODY MOUNTED M5 ROD EYE (CODE 'S')

STANDARD RADIAL VERSION

PLUNGER MOUNTED M5 ROD EYE (CODE 'U')



NOTE:- READ INSTALLATION SHEET X133-19 FOR FULL INSTRUCTIONS FOR USE.

**ATEX / IECEx / UKEX APPROVED TO II 1G**  
**Ex ia IIC T4 Ga (Ta= -40° to +80°C)**  
**Ui 11.4V, Ii 0.2A, Pi 0.51W**

APPROVED FOR USE IN CONJUNCTION WITH A GALVANICALLY ISOLATED BARRIER.

NOTE: APPROVAL ONLY APPLIES AT NORMAL ATMOSPHERIC PRESSURE!

DRAWINGS NOT TO BE CHANGED WITHOUT REFERENCE TO THE CHANGE PROCEDURE. CHANGES TO PARTS USED IN INTRINSICALLY SAFE PRODUCT MUST BE APPROVED BY THE AUTHORISED PERSON. THIS IS AN UNCONTROLLED PRINT AND WILL NOT BE UPDATED.

REV	CHANGE HISTORY	DR'WN	DATE	CHK'D
D	MAG TIP & RADIAL END/ROD EYES RAN1311/1312	ASC	21/04/2021	ASC

NOTE: SENSORS WITH TRAVEL UP TO 50mm ARE MADE IN STANDARD LENGTHS					
BODY LENGTH (mm)					
TRAVEL (mm)		STANDARD		FLANGE	
CALIBRATED	MECHANICAL	'XA' AXIAL	'XR' RADIAL	'YA' AXIAL	'YR' RADIAL
0-51 TO 0-70	70	125.0	143.5	141.3	159.8
0-71 TO 0-100	100	155.0	173.5	171.3	189.8

THE PLUNGER RETRACTS 5mm FROM START OF CALIBRATED TRAVEL (2mm FOR SPRUNG VERSIONS) AND EXTENDS 9.5mm\* BEYOND END OF MECHANICAL TRAVEL. \*DOES NOT INCLUDE DIFFERENCE BETWEEN CALIBRATED AND MECHANICAL TRAVEL. DIMENSIONS ARE NOMINAL. 'V' CODED PLUNGER WILL DEPART SENSOR BODY.



APPROVED BY	REV		X ±0.4
RDM	D		X.X ±0.2
DESCRIPTION		X.XX ±0.1	
X133 INTRINSICALLY SAFE MID-STROKE LINEAR SENSOR		DIMS mm	
SCALE	2:3	DRAWING NUMBER	
A3		X133-11	
			SHEET 1 OF 1