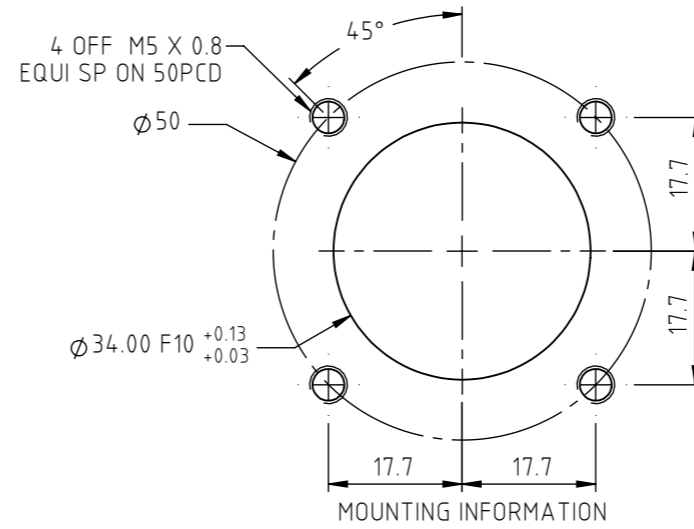
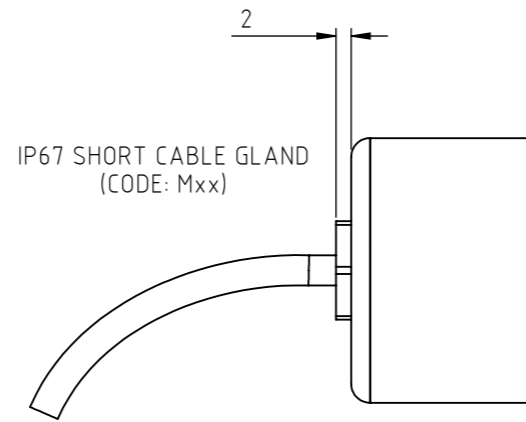
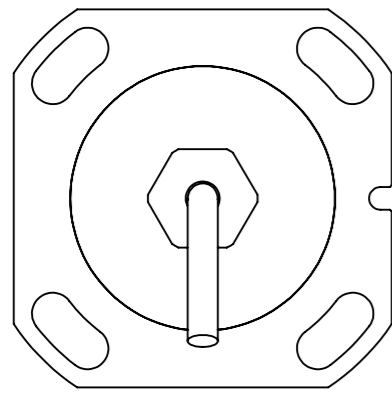


GAIN AND OFFSET ADJUSTMENTS
SEALED (CODE:Y)



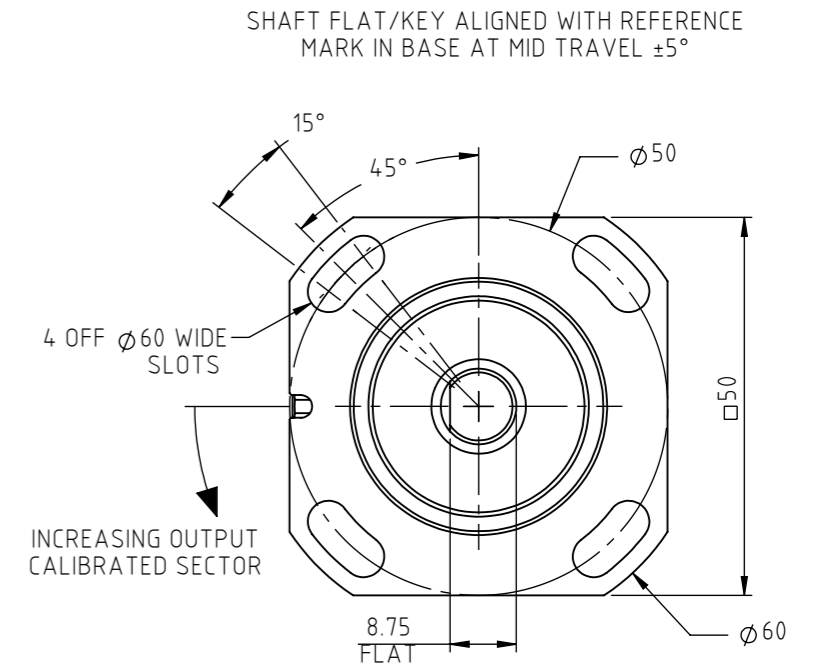
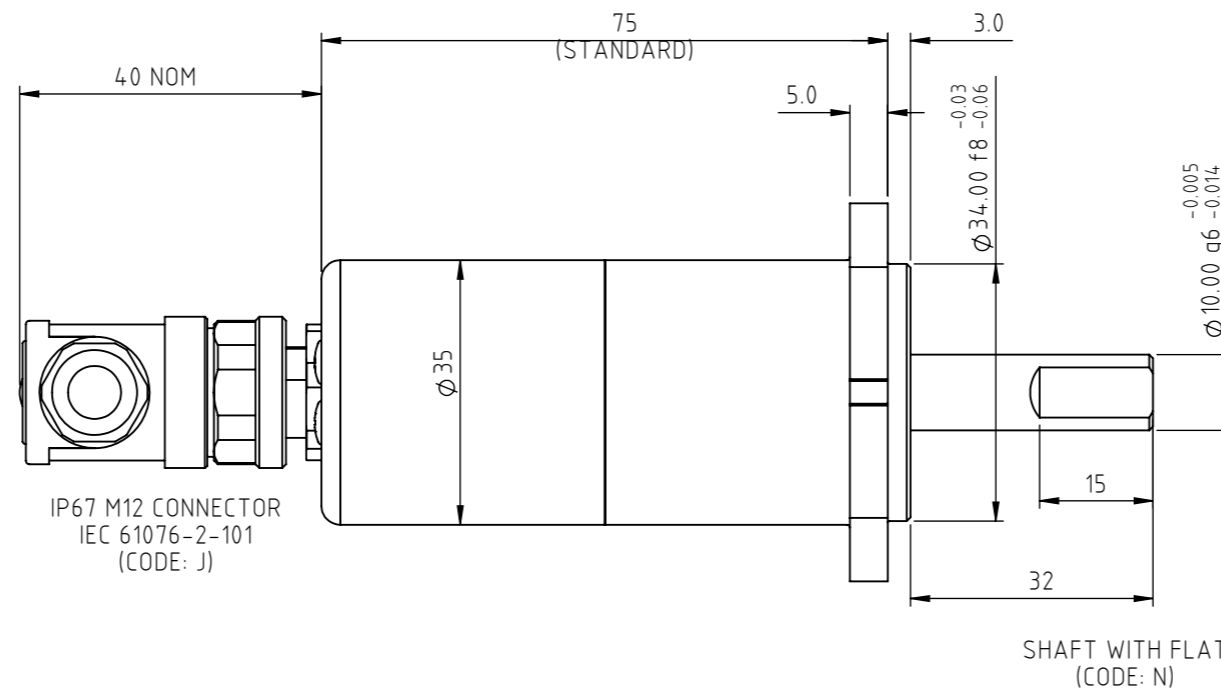
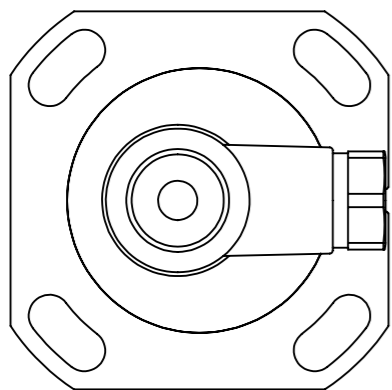
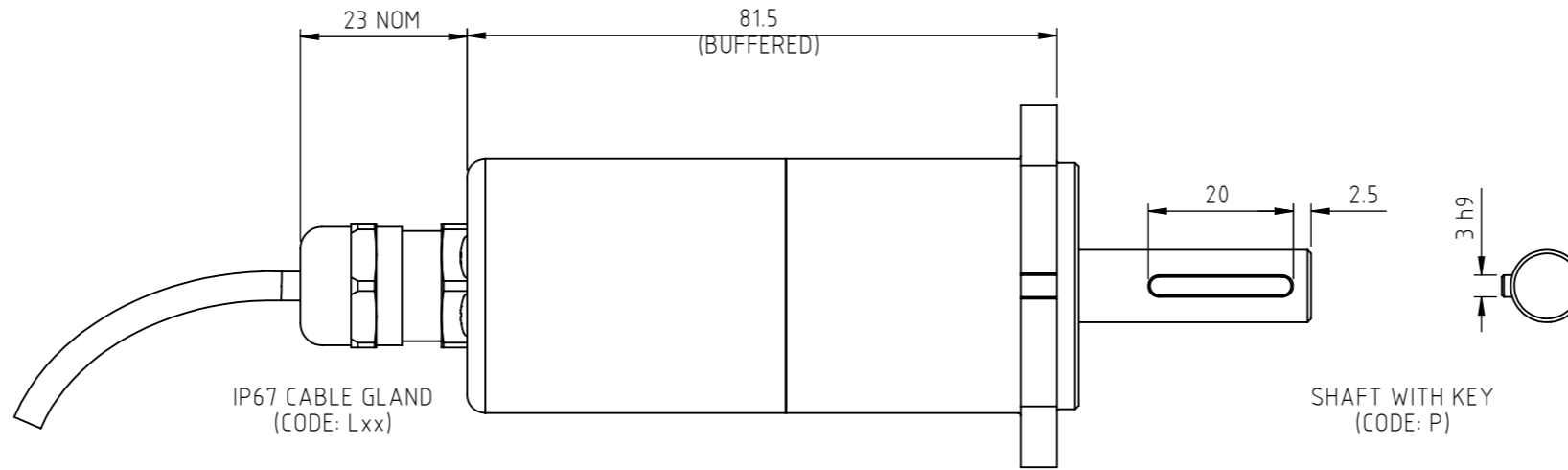
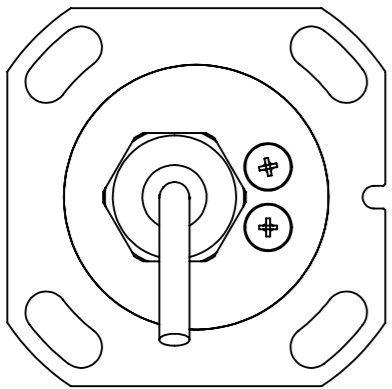
ELECTRICAL OPTIONS/ SPECIFICATIONS		
OUTPUT	SUPPLY (NOM.)	
'A' 0.5 - 4.5V RATIO METRIC	5V	— STANDARD
'B' ±5V	±15V	— BUFFERED
'C' 0.5 - 9.5V	24V	
'D' ±10V	±15V	
'G' 0.5 - 4.5V	24V	
SUPPLY CURRENT 12mA TYP. 20mA MAX.		
'E' 4 TO 20mA 2-WIRE	24V (18V MIN.)	
'F' 4 TO 20mA SINK†	24V	
'H' 4 TO 20mA SOURCE‡	24V	
† OUTPUT COMPLIANCE 5-28V		
‡ DRIVE 300Ω MAXIMUM TO 0V		

CONNECTIONS:	CABLE 3-CORE	CABLE 4-CORE	CONNECTOR
+Ve	RED	RED	:1
0V	BLACK	GREEN	:3
-Ve	-	YELLOW	:4 O/P 'B' & 'D'
OUTPUT	WHITE	BLUE	:2
BODY	SCREEN	SCREEN	:4 NOT O/P 'B' & 'D'

CABLE: 0.2mm², O/A SCREEN, PUR JACKET. O/D: 3-CORE: Ø4mm, 4-CORE: Ø4.6mm,
SUPPLIED WITH 50cm OR REQUIRED LENGTH IN cm. e.g. 'L50'
CONNECTORS: MAXIMUM CONDUCTOR CROSS SECTION 0.25mm²

RANGE OF DISPLACEMENT FROM 0-16° TO 0-160° e.g. 76°
IN INCREMENTS OF 1°
BODY MATERIAL:- STAINLESS STEEL.

MAXIMUM SHAFT LOAD: AXIAL 250N, RADIAL 350N



DRAWINGS NOT TO BE CHANGED WITHOUT REFERENCE TO THE CHANGE PROCEDURE.
CHANGES TO PARTS USED IN INTRINSICALLY SAFE PRODUCT MUST BE APPROVED BY THE AUTHORISED PERSON.
THIS IS AN UNCONTROLLED PRINT AND WILL NOT BE UPDATED.

REV	CHANGE HISTORY	DR'WN	DATE	CHK'D
A	FIRST RELEASE	ASC	13/01/2022	ASC



APPROVED BY RDM	REV A	X ±0.4 X.X ±0.2 X.XX ±0.1 DIMs mm
DESCRIPTION HIGH SHAFT LOADING ROTARY SENSOR		
SCALE 1:1	DRAWING NUMBER P510-11	
A3	SHEET 1 OF 1	