

## ELECTRICAL INFORMATION

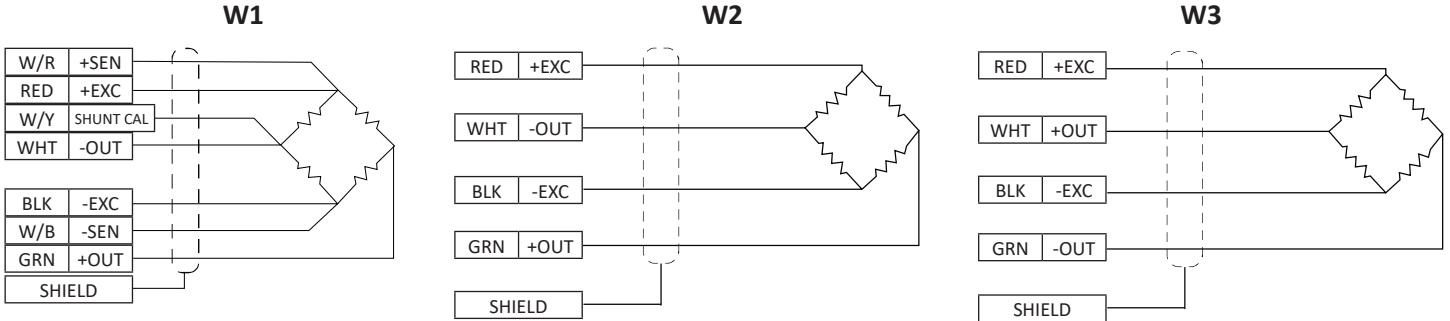
Load Cell Series	Cell Type	Upscale (4) Mode	Integral Cable Wiring	Std. Cable Type	Cable Length, Feet (5)	Connector Wiring	Mating Connector (2)
1000	Univ.	Tension	W1	A	10	C1	PC06W-10-6S(SR)
1100	Univ.	Tension	W1	A	10	C1	PC06W-10-6S(SR)
1100	Comp.	Tension	W1	A	10	C1	PC06W-10-6S(SR)
1200	Univ.	Tension	W1	A	10	C1	PC06W-10-6S(SR)
1200	Comp.	Tension	W1	A	10	C1	PC06W-10-6S(SR)
12x8	Univ.	Tension	-	-	-	C6	PT06A-10-6S(SR)
1500	Univ.	Tension	-	-	-	C1	PT06A-10-6S(SR)
1600	Univ.	Tension	-	-	-	C2	PT06A-12-8S(SR)
1600	Comp.	Tension	-	-	-	C2	PT06A-12-8S(SR)
1700	Univ.	Tension	-	-	-	C6	PT06A-10-6S(SR)
1800	Univ.	Tension	-	-	-	C2	PT06A-12-8S(SR)
3200	Univ.	Tension	W2	B	20	-	-
3200	Comp.	Tension	W2	B	20	-	-
4200	Comp.	Tension	W2	B	20	-	-
4600	Comp.	Tension	W2	B	20	-	-
5200	Univ.	Tension (1)	W1	A	10	C1	PC06W-10-6S(SR)
SSB	Comp.	Comp.	W2	C	5	-	-
MB, MBP	Comp.	Comp.	W2	C	5	-	-
SM	Univ.	Tension	W2	C	5	-	-
SSM	Univ.	Tension	W2	A	10	C1	PC06W-10-6S(SR)
SMT	Univ.	Tension	W2	D	5	-	-
SPI	Univ.	Comp.	W2	C	5	-	-
SML	Univ.	Tension	W2	D	5	-	-
LBM	Comp.	Tension	W3	G	5	-	-
LBS	Comp.	Tension	W2	G	5	-	-
LW	Comp.	Comp.	W2	-	5	-	-
WeighCheck	Comp.	Tension	W2	B	30	-	-
WMC	Univ.	Tension	W3	G	-	-	-
WMC ≥15K	Univ.	Tension	-	-	-	C3	PT06A-10-6S(SR)
2410-2430	Univ.	Tension	-	-	-	C3	PT06A-10-6S(SR)
2440-2450	Univ.	Tension	-	-	-	C3	MS3106A-145-6S
2100	Univ.	Tension	-	-	-	C4	MS3106A-145-6S
2100	Comp.	Tension	-	-	-	C4	MS3106A-145-6S
MRT	Torque	CW	W2	D	5	-	-
ULC	Univ.	Tension	W2	D	5	-	-
MCC	Comp.	Comp.	W2	E	5	-	-
CX	-	-	-	-	--	C5	PT06A-12-8S(SR)

- Note:
- 1) Thrust axis only.
  - 2) Mating connector for the stock version of cell. Consult factory for alternate connectors and specials.
  - 3) Consult factory. Several connectors and mating cable types are available.
  - 4) Indicates the loading direction which causes a positive output.
  - 5) Stock length; other lengths available on special order.

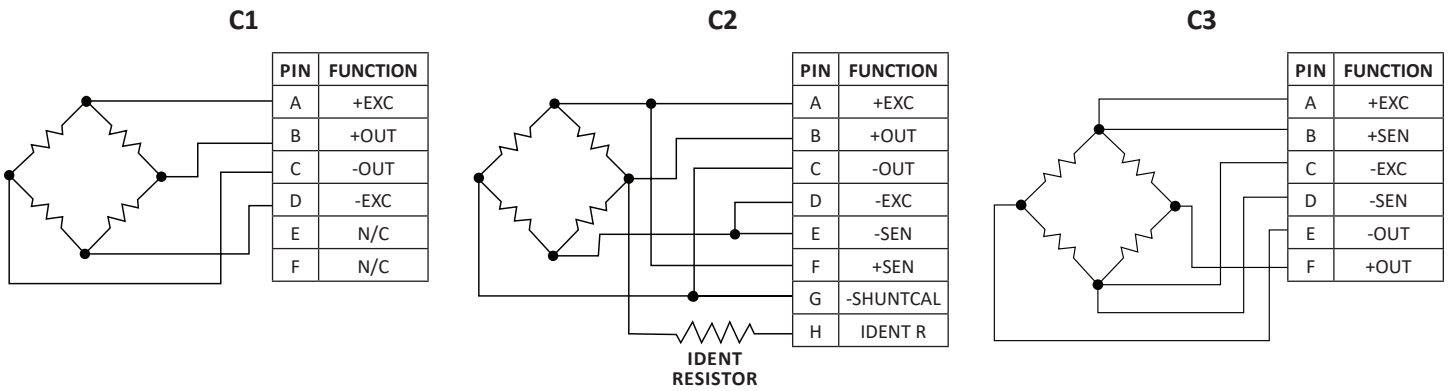
LOAD CELL INTEGRAL CABLES				
Cable Type	Wire Size	No. of Wires	Shield	Description
A	22 AWG	7	Braid	Heavy-duty, PVC jacket
B	22 AWG	4	Braid	Heavy-duty, polyurethane jacket
C	28 AWG	4	Braid	Tough, clear PVC jacket
D	28 AWG	4	Spiral	Ultra-flexible, black PVC jacket
E	30 AWG	4	Braid	Ultra-flexible, gray PVC jacket
F	20 AWG	4	Braid	Teflon jacket
G	30 AWG	4	Braid	Teflon jacket

## ELECTRICAL INFORMATION CONTINUED

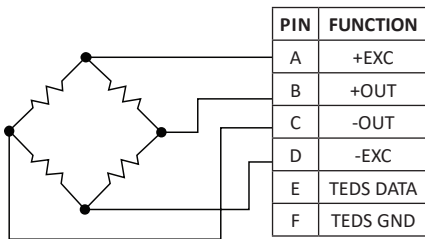
### LOAD CELL CABLE WIRING



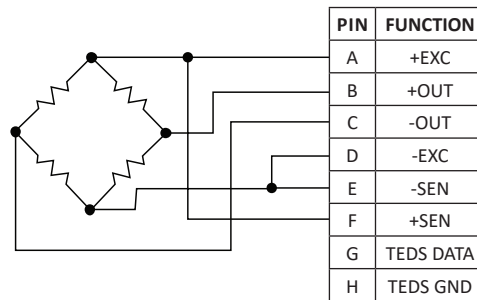
### LOAD CELL CONNECTOR WIRING



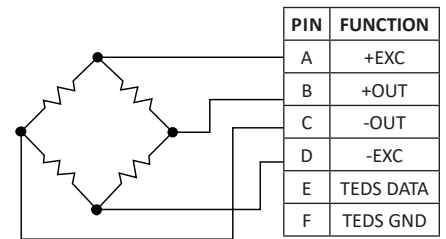
**C1 with TEDS option**



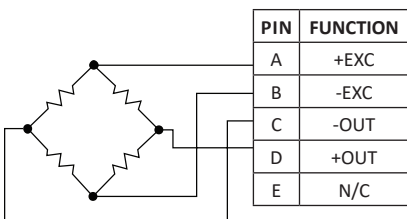
**C2 with TEDS option**



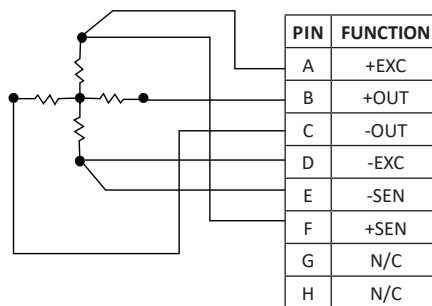
**C3 with TEDS option**



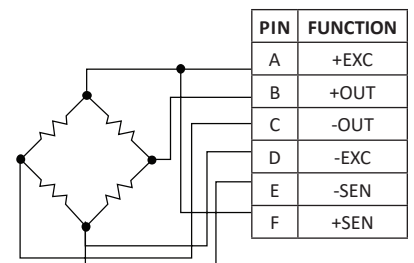
**C4**



**C5**



**C6**



## CABLE WIRE COLOR CODING

### LOAD CELL CABLE WIRING

Load Cells W1	
Function	Color
Positive Sen	White-Red
Positive Exc	Red
Shunt Cal	White-Yellow
Negative Out	White
Negative Sen	Black
Negative Exc	White-Blue
Positive Out	Green
Shield	Shield

Load Cells W2	
Function	Color
Positive Exc	Red
Negative Out	White
Negative Exc	Black
Positive Out	Green
Shield	Shield

Load Cells W3	
Function	Color
Positive Exc	Red
Positive Out	White
Negative Exc	Black
Negative Out	Green
Shield	Shield

### TORQUE TRANSDUCER CONNECTOR WIRING

Torque Transducers		
Function	Description	Color
Supply (+)	+12 to +28 VDC	Brown
Supply (GND)	0 VDC	Green
Signal (+)	±5 VDC (+10 VDC)	Yellow
Signal (GND)	0 VDC	White
Speed Control (Option)	5V TTL	Gray
Shield	Shield	Shield

### 3-AXIS SENSOR CONNECTOR WIRING

3-Axis Sensors				
Channel	Symbol	Description	Color	Pin
X-Axis	+Us	sensor supply	brown	2
	-Us	sensor supply	white	1
	+Ud	bridge output	green	3
	-Ud	bridge output	yellow	4
Y-Axis	+Us	sensor supply	pink	6
	-Us	sensor supply	grey	5
	+Ud	bridge output	blue	7
	-Ud	bridge output	red	8
Z-Axis	+Us	sensor supply	purple	10
	-Us	sensor supply	black	9
	+Ud	bridge output	grey / pink	11
	-Ud	bridge output	red / blue	12

## CABLE WIRE COLOR CODING CONTINUED

### 3-AXIS ROUND SERIES SENSOR CONNECTOR WIRING

3-Axis Round Sensors				
Channel	Symbol	Description	Color	Pin
x-axis	+Us	positive bridge supply	blue	2
	-Us	negative bridge supply	brown	1
	+Ud	positive bridge output	white	3
	-Ud	negative bridge output	green	4
y-axis	+Us	positive bridge supply	yellow	6
	-Us	negative bridge supply	pink	5
	+Ud	positive bridge output	black	7
	-Ud	negative bridge output	grey	8
z-axis	+Us	positive bridge supply	purple	10
	-Us	negative bridge supply	red	9
	+Ud	positive bridge output	grey / pink	11
	-Ud	negative bridge output	red / blue	12

### 6-AXIS SERIES SENSOR CONNECTOR WIRING

6-Axis Sensors				
Channel	Symbol	Description	Color	Pin
1	+Us	positive bridge supply	white	1
	-Us	negative bridge supply	brown	2
	+Ud	positive bridge output	green	3
	-Ud	negative bridge output	yellow	4
2	+Us	positive bridge supply	gray	5
	-Us	negative bridge supply	pink	6
	+Ud	positive bridge output	blue	7
	-Ud	negative bridge output	red	8
3	+Us	positive bridge supply	black	9
	-Us	negative bridge supply	purple	10
	+Ud	positive bridge output	gray-pink	11
	-Ud	negative bridge output	red-blue	12
4	+Us	positive bridge supply	white-green	13
	-Us	negative bridge supply	brown-green	14
	+Ud	positive bridge output	white-yellow	15
	-Ud	negative bridge output	yellow-brown	16
5	+Us	positive bridge supply	white-gray	17
	-Us	negative bridge supply	gray-brown	18
	+Ud	positive bridge output	white-pink	19
	-Ud	negative bridge output	pink-brown	20
6	+Us	positive bridge supply	white-blue	21
	-Us	negative bridge supply	brown-blue	22
	+Ud	positive bridge output	white-red	23
	-Ud	negative bridge output	brown-red	24