

## Datasheet

### Miniture metal bellows coupling with collet clamps

# KB2

0.1 Nm up to 10 Nm



### Features

- Backlash-free
- High torsional stiffness, compensation of shaft misalignment at low restoring forces
- Easy assembly with friction-locked clamp hubs

### Rpm

Max. 15.000 min<sup>-1</sup>

### Material

- Bellows: stainless steel
- Hub: aluminium

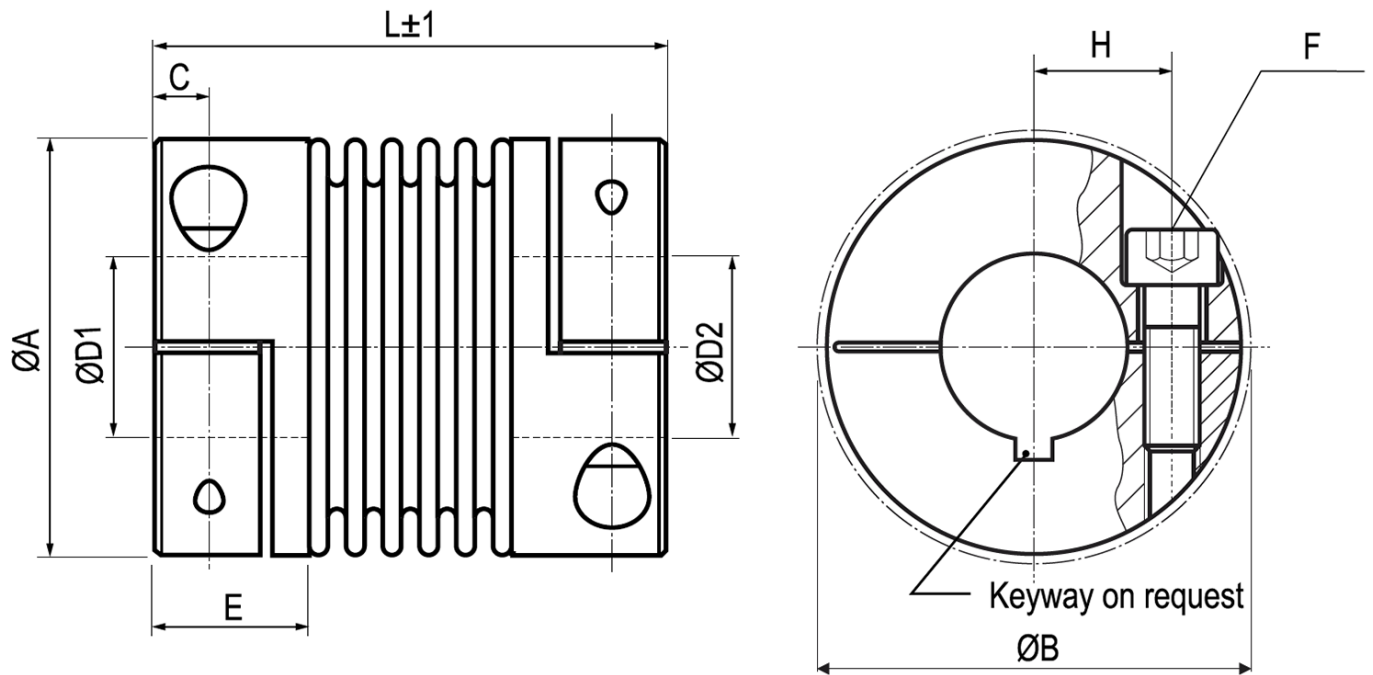
### Temperature range

-30°C up to 120°C

### Optional

- VA = Full stainless steel version
- VAW = Laserwelded

## Product details KB2



Size		1	5		10			15		20			45		100			
Drehmoment	[Nm]	0.1	0.5		1			1.5		2			4.5		10			
Length	[mm]	L	25	21	25	28	23	26	31	26	31	32	38	42	41	50	47	57
Outer- $\varnothing$	[mm]	A	10	15.5		15.5			20		25			32.5		40.5		
Outer- $\varnothing$ with screwhead	[mm]	B	11	17.5		17.5			21		27			34		41.5		
Distance	[mm]	C	2	2.5		2.5			3		3.5			5		5		
Bore- $\varnothing$ (H7)	[mm]	D <sub>1</sub> / D <sub>2</sub>	1 - 4	3 - 8		3 - 8			3 - 10		3 - 14			6 - 16		6 - 25		
Hublength	[mm]	E	7	7		7			8.5		11			13		13.5		
Screw ISO 4762		F	M1.6	M2		M2			M2.5		M3			M4		M4		
Tightening torque	[Nm]		0.1	0.43		0.43			0.85		2			3.5		4.5		
Center distance	[mm]	H	3.4	5.2		5.2			7		9			12		15.5		
Weight	[g]		3	7.5	7.8	8.2	9	9.3	10	13	15	29	32	33	61	67	86	106
Moment of Inertia	[g x cm <sup>2</sup> ]		0.5	2.7	2.8	3	3.1	3.4	3.7	8	9.3	24	27	29	100	112	233	290
Spring stiffness torsional	[Nm/rad]		65	260	200	160	510	380	310	750	700	1500	1300	1050	6500	4200	8100	6800
Spring stiffness radial	[N/mm]		10	43	18	9	74	31	16	59	20	67	21	11	168	41	120	29
Spring stiffness axial	[N/mm]		14	13	10	8	27	20	16	15	9	12	11	9	32	20	27	17
Misalignment radial	[mm]		0.12	0.1	0.15	0.2	0.1	0.15	0.2	0.1	0.15	0.15	0.2	0.25	0.1	0.2	0.15	0.3
Misalignment axial	[mm]		0.2	0.2	0.3	0.4	0.2	0.3	0.4	0.3	0.4	0.3	0.4	0.5	0.3	0.5	0.4	0.6
Misalignment angular	[°]		1.2	1	1.5	2	1	1.5	2	1.5	2	1.5	1.5	2	1.5	2	1.5	2

## Order code

Example:	<b>KB2</b>	/	<b>20</b>	/	<b>33</b>	/	<b>7</b>	/	<b>9pfn</b>	/	<b>VA</b>
	Model		Size		Total length [mm]		Bore D <sub>1</sub> [mm] (for keyway attach pfn)		Bore D <sub>2</sub> [mm] (for keyway attach pfn)		Options