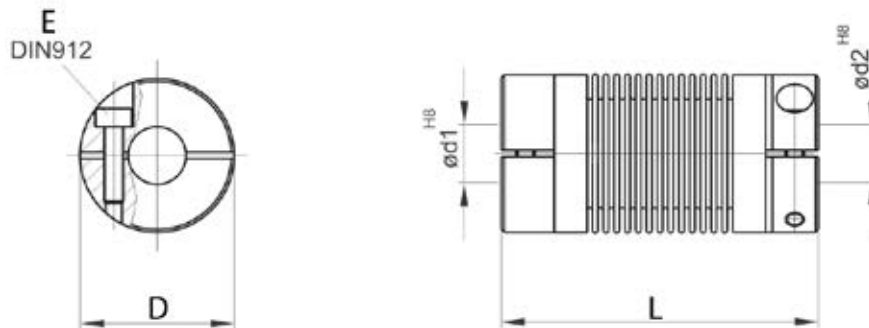


# Coupling Type BKNK

- backlash-free and angular synchronism transmission
- best compensation of misalignment
- high torsionally rigid, low reset force
- vibration-reducing
- ideal application for measuring task
- construction with Nickelbellows and clamping hubs



Type		BKNK 1733	BKNK 2537
max. Torque [Ncm]		39	328
Overall length L [mm]		33±1	37±1
Outer diameter D [mm]		16,3	25
Bore diameter d <sub>1</sub> , d <sub>2</sub> [mm]		3-6	6-12
max. Speed [min <sup>-1</sup> ]		10.000	10.000
cylinder head screw E		M 2x6	M 2,5x8
max. clamping torque [Ncm]		35	66
max. offset of shafts	radial [mm]	±0,72	±0,46
	axial [mm]	±3,09	±2,77
	angular [degrees]	±14	±8
Spring clip stiffnes [Nm/rad]		80	462
Radial spring stiffnes [N/mm]		5,8	38,1
Mass moment of inertia [gcm <sup>2</sup> ]		4,89	25,4
Weight [g]		11,5	28,5
Material	Flange	Aluminium anodized	
	Bellows	Nickel	

The mentioned specifications are valid for an monotonic loading.

Odering example: BKNK 1733 / 03 / 04

