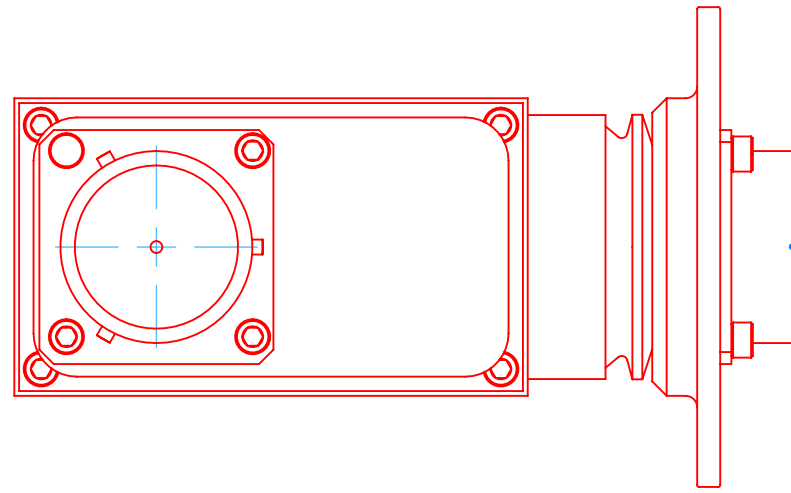


1002443

26 CONTACT STATOR CONNECTOR : BENDIX PT02E-16-26P

CONTACT A-W		FUNCTION 20 SLIP RINGS	
	IF ENCODER	IF RESOLVER	
X	+5 to +20VDC	OSCILLATOR HIGH	
Y	GROUND	OSCILLATOR LOW	
Z	OUTPUT A	COSINE HIGH	
a	OUTPUT B	COSINE LOW	
b	OUTPUT I	SINE HIGH	
c	OUTPUT A +B	SINE LOW	



26 CONTACT ROTOR CONNECTOR
BENDIX PR02E-16-26S

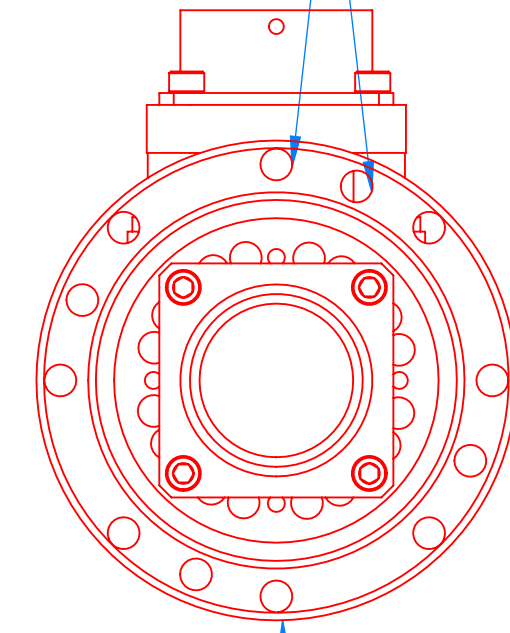
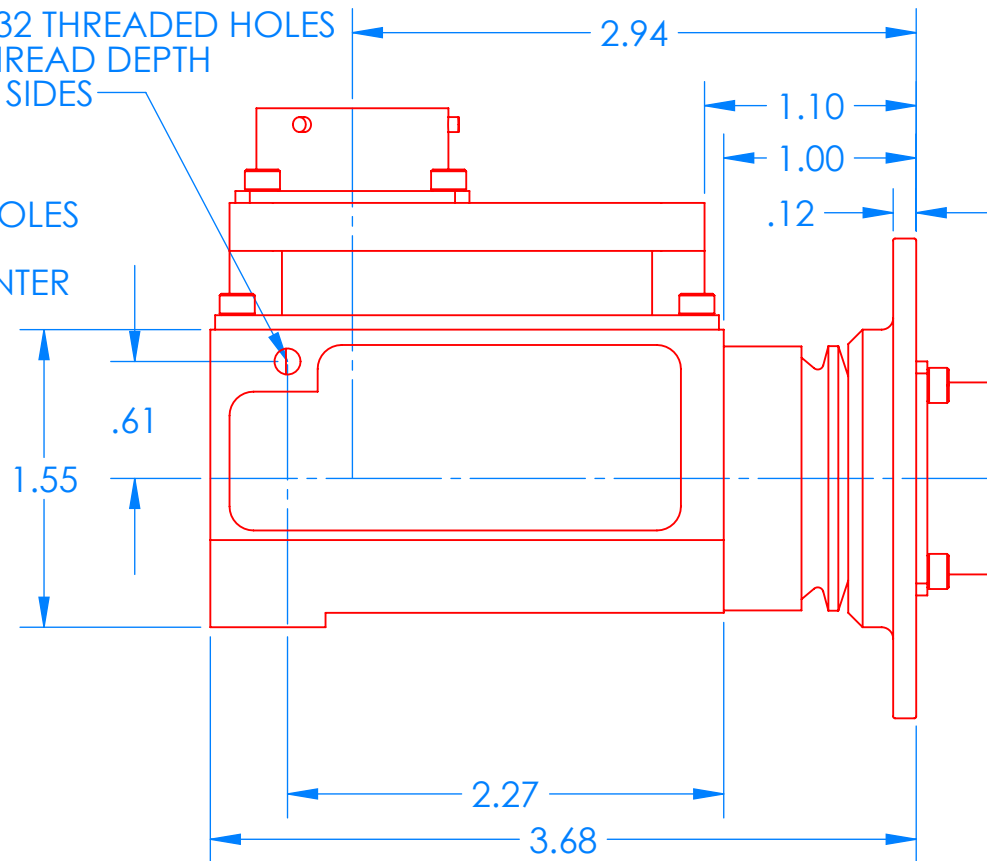
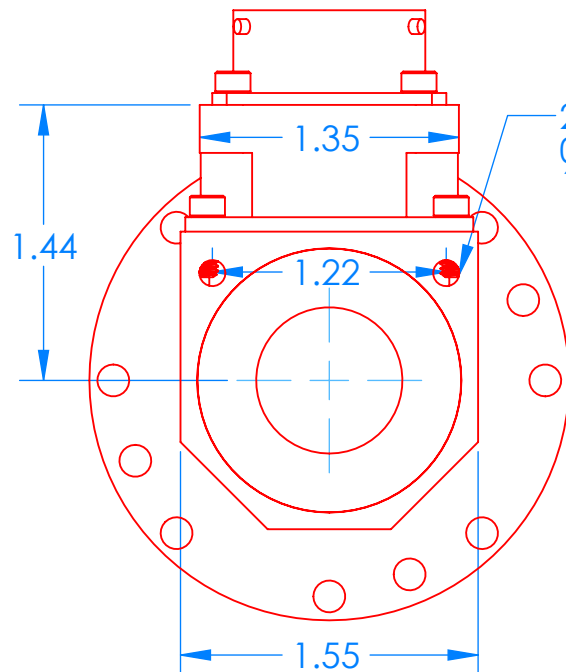
CONTACTS A-W : 20 SLIP RINGS
CONTACTS X-c : NO CONNECTION

4 THRU HOLES
EQ SP ON 2.187 B.C.
FOR 8-32 SCREW CLEARANCE

8 THRU HOLES
EQ SP ON 2.250 B.C.
FOR 8-32 SCREW CLEARANCE

1 x 8-32 THREADED HOLES
0.2 THREAD DEPTH
BOTH SIDES

2 x 8-32 THREADED HOLES
0.4 THREAD DEPTH
1.218 CENTER TO CENTER



TYPE A ROTOR
Ø 2.499±.001

The encoders will operate from +5 to +20 Vdc.
Current Draw is 50 to 90 mA.
Temperature range of resolver units is -40C to +120C.

The resolvers require a 10 KHz, 16 V peak to peak sine wave oscillator.
The Michigan Scientific model RESSC-2-12V resolver electronics includes
this oscillator. Temperature range of resolver is -40C to +120C (-40F to +250F).

Model SR20A_/E___/AX2 Weight 15oz (19oz with mating connectors)
Model SR20A_/R360/AX2 Weight 16 oz (20oz with mating connectors)

20 SLIP RINGS & AN OPTICAL ENCODER (E___) OR RESOLVER (R360) IN A WEATHERPROOF HOUSING

MICHIGAN SCIENTIFIC CORPORATION
8500 ANCE ROAD
CHARLEVOIX, MICHIGAN 49720
www.michsci.com

PRODUCT LINE:
CUSTOMER CODE: MSC PROJECT CODE: ERT
DESCRIPTION: CUSTOMER MODEL OF ERT SR20A/E___/AX2

SIZE DWG. NO. REV
B 1002443 **A**

SCALE: 1:1 SHEET 1 OF 1