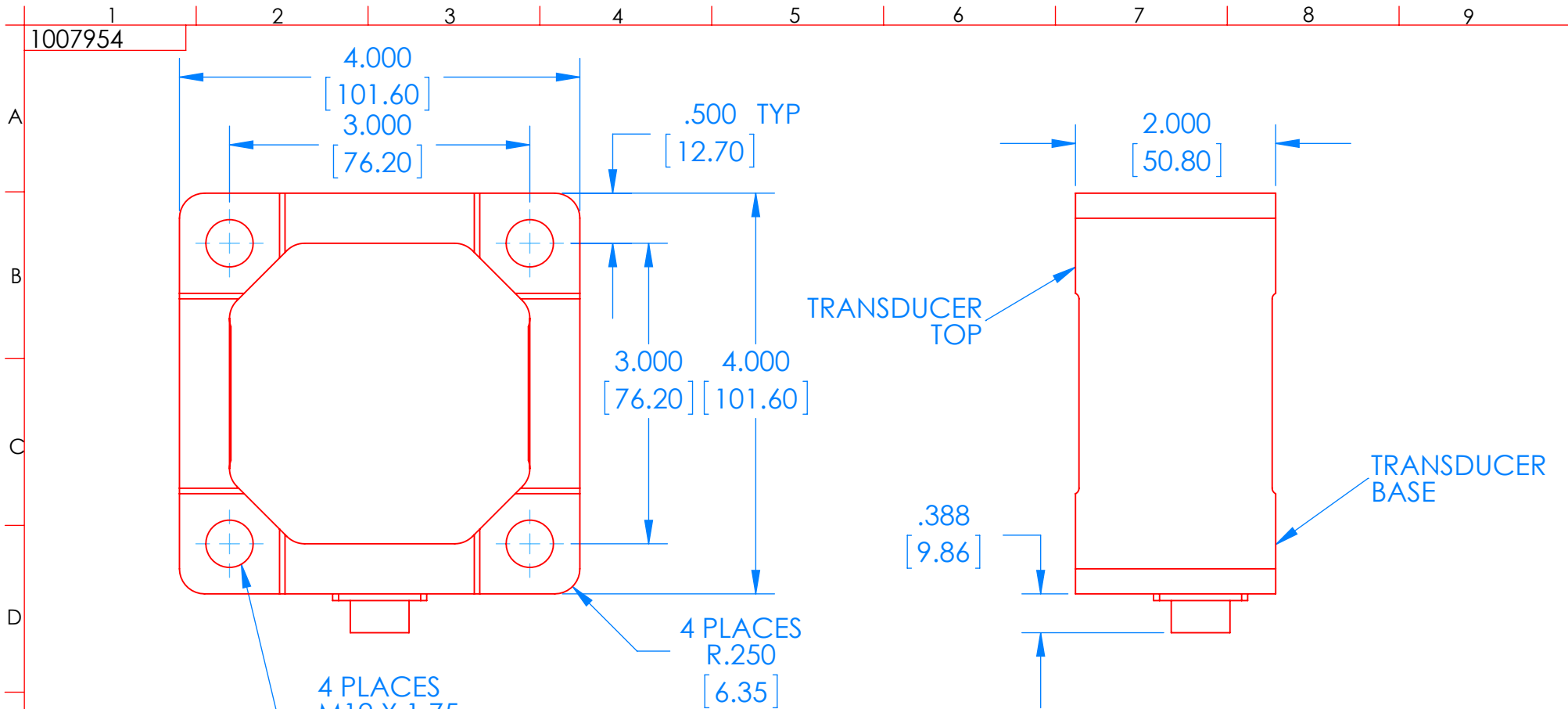


1007954



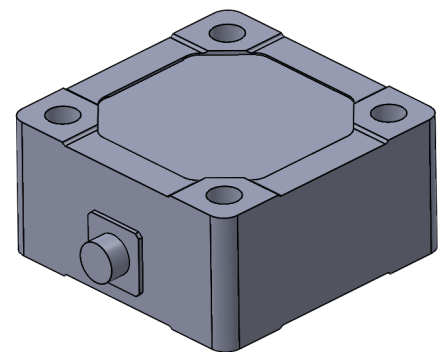
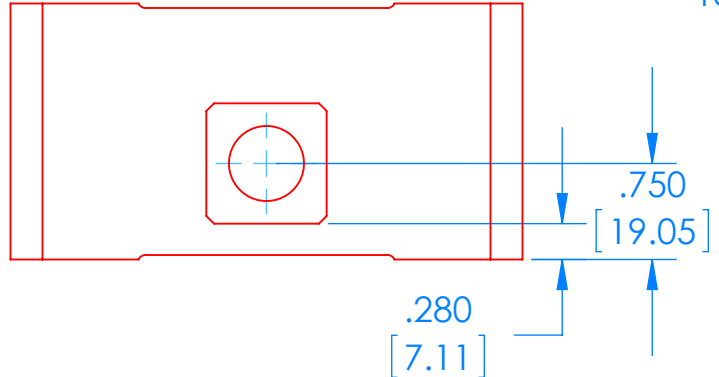
4 PLACES
M12 X 1.75
TOP AND BASE

TRANSDUCER
TOP

TRANSDUCER
BASE

NOTES:

- Dimensions are inch [mm]; all tolerances are ± 0.005 in [± 0.13 mm], unless specified otherwise.
- Positive outputs result when the transducer top is displaced relative to the transducer base in the directions indicated.



	MICHIGAN SCIENTIFIC CORPORATION 8500 ANCE ROAD CHARLEVOIX, MICHIGAN 49720 www.michsci.com	
	PRODUCT LINE: THREE DIRECTIONAL LOAD CELLS	
MODEL: TR3D-C-16K		
SIZE A	DWG. NO. 1007954	
SCALE: 1:1.5		SHEET 1 OF 1