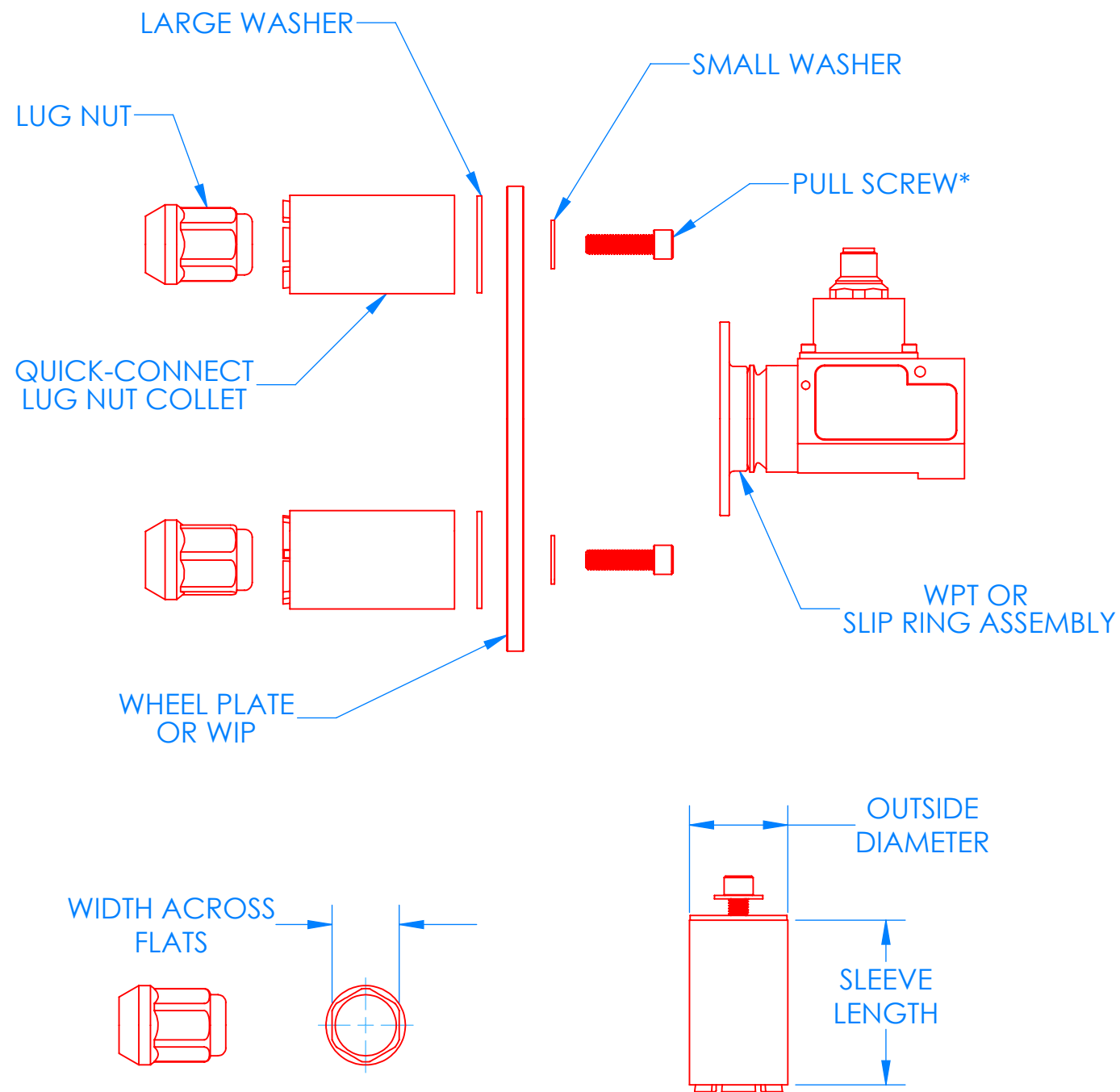


1015011

QUICK-CONNECT LUG NUT COLLETS



MODEL NAME	WIDTH ACROSS FLATS		SLEEVE LENGTH	OUTSIDE DIAMETER	SLEEVE MATERIAL	PULL SCREW
	MIN	MAX				
AAA16	0.563 [14.3]	0.625 [15.9]	1.625 [41.3]	0.945 [24.0]	STAINLESS STEEL	1/4-28
AAA25			2.500 [63.5]			
AA16	0.625 [15.9]	0.688 [17.5]	1.625 [41.3]	0.945 [24.0]	STAINLESS STEEL	1/4-28
AA25			2.500 [63.5]			
A14	0.688 [17.5]	0.750 [19.1]	1.470 [37.3]	1.100 [27.9]	ALUMINUM	1/4-28
A16			1.625 [41.3]			
A20			2.000 [50.8]			
A30			3.000 [76.2]			
AB16	0.728 [18.5]	0.787 [20.0]	1.625 [41.3]	1.125 [28.6]	STAINLESS STEEL	1/4-28
BB21	0.765 [19.4]	0.825 [21.0]	2.125 [54.0]	1.269 [32.2]	ALUMINUM	1/4-28
BB30			3.000 [76.2]			
B21	0.813 [20.6]	0.875 [22.2]	2.125 [54.0]	1.220 [31.0]	STAINLESS STEEL	1/4-28
B21-SS			2.125 [54.0]			
B30			3.000 [76.2]			
CCC21	0.875 [22.2]	0.938 [23.8]	2.125 [54.0]	1.302 [33.1]	ALUMINUM	1/4-28
CCC30			3.000 [76.2]			
CC21	0.921 [23.4]	0.984 [25.0]	2.125 [54.0]	1.470 [37.3]	ALUMINUM	1/4-28
CC30			3.000 [76.2]			
C21	1.000 [25.4]	1.063 [27.0]	2.125 [54.0]	1.470 [37.3]	ALUMINUM	1/4-28
C30			3.000 [76.2]			
DD30	1.125 [28.6]	1.188 [30.2]	3.000 [76.2]	1.630 [41.4]	ALUMINUM	1/4-28
D28	1.250 [31.8]	1.310 [33.3]	2.875 [73.0]	1.850 [41.4]	ALUMINUM	1/4-28
D32-HS	1.250 [31.8]	1.310 [33.3]	3.250 [82.6]	1.875 [47.6]	STAINLESS STEEL	1/2-20
DF32	1.475 [37.5]	1.535 [39.0]	3.250 [82.6]	2.186 [55.5]	ALUMINUM	5/16-18
F32	1.563 [39.7]	1.625 [41.3]	3.250 [82.6]	2.186 [55.5]	ALUMINUM	5/16-18

ALL UNITS ARE INCH [MM].

*TORQUE 1/4-28 SCREWS TO 70 IN-LB. TORQUE 5/16-18 SCREWS TO 100 IN-LB. TORQUE 1/2-20 SCRWES TO 360 IN-LB. (TORQUE VALUES ARE WITHOUT ANTI-SIEZE)

DETAILS AND SPECIFICATIONS PROVIDED IN THIS DOCUMENT ARE PURELY FOR INFORMATIONAL PURPOSES AND ARE SUBJECT TO ALTERATIONS. NO LIABILITY IS ACCEPTED FOR ERRORS OR OMISSIONS. ©2020 MICHIGAN SCIENTIFIC CORPORATION

M MICHIGAN SCIENTIFIC CORPORATION
8500 ANCE ROAD
CHARLEVOIX, MICHIGAN 49720
www.michsci.com

PRODUCT LINE:

CUSTOMER CODE: MSC PROJECT CODE: WIP HARDWARE

DESCRIPTION: QUICK-CONNECT LUG NUT COLLET GUIDE

SIZE	DWG. NO.	REV
B	1015011	+

SCALE: 1:2 SHEET 1 OF 1