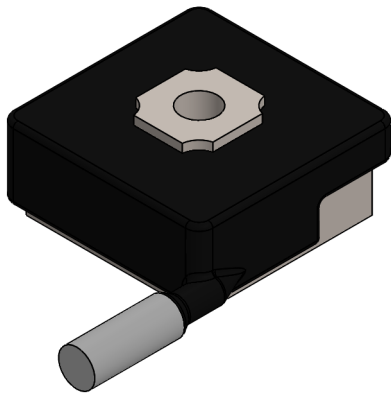
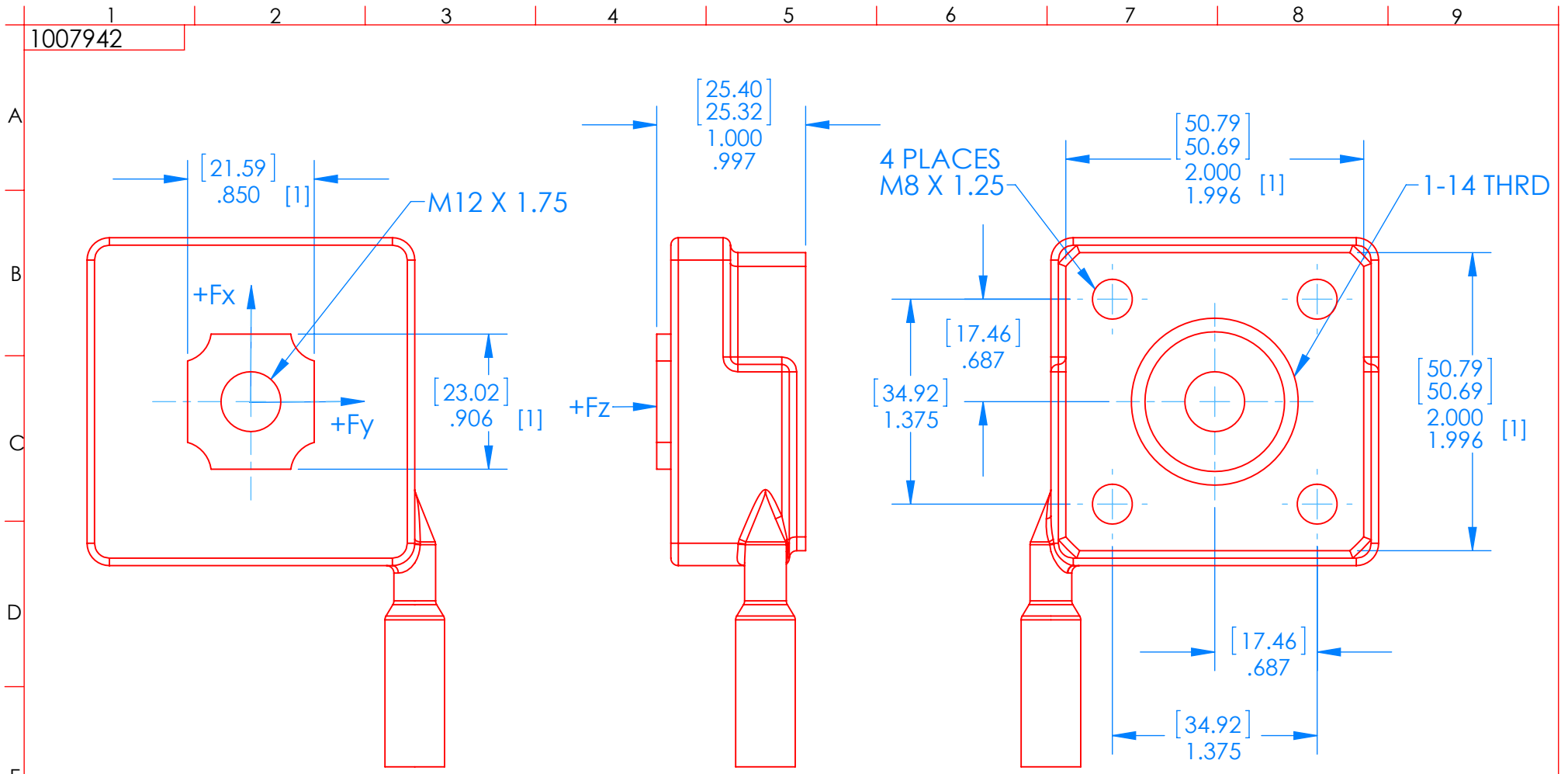



1007942



Notes:

- Dimensions are in inch [mm]; all tollerances are ± 0.005 in [0.13 mm] unless otherwise noted.
- Pilot surfaces: [1]; maximum reccomended pilot depth = 0.030 in [0.76 mm] for base, 0.100 in [2.54 mm] for top.
- Positive outputs result when the transducer tip is displaced relative to the transducer base in the directions indicated.

 MICHIGAN SCIENTIFIC CORPORATION 8500 ANCE ROAD CHARLEVOIX, MICHIGAN 49720 www.michsci.com	
PRODUCT LINE: THREE DIRECTIONAL LOAD CELLS	
MODEL: TR3D-B-4500	
SIZE A	DWG. NO. 1007942
SCALE: 1:1	SHEET 1 OF 1